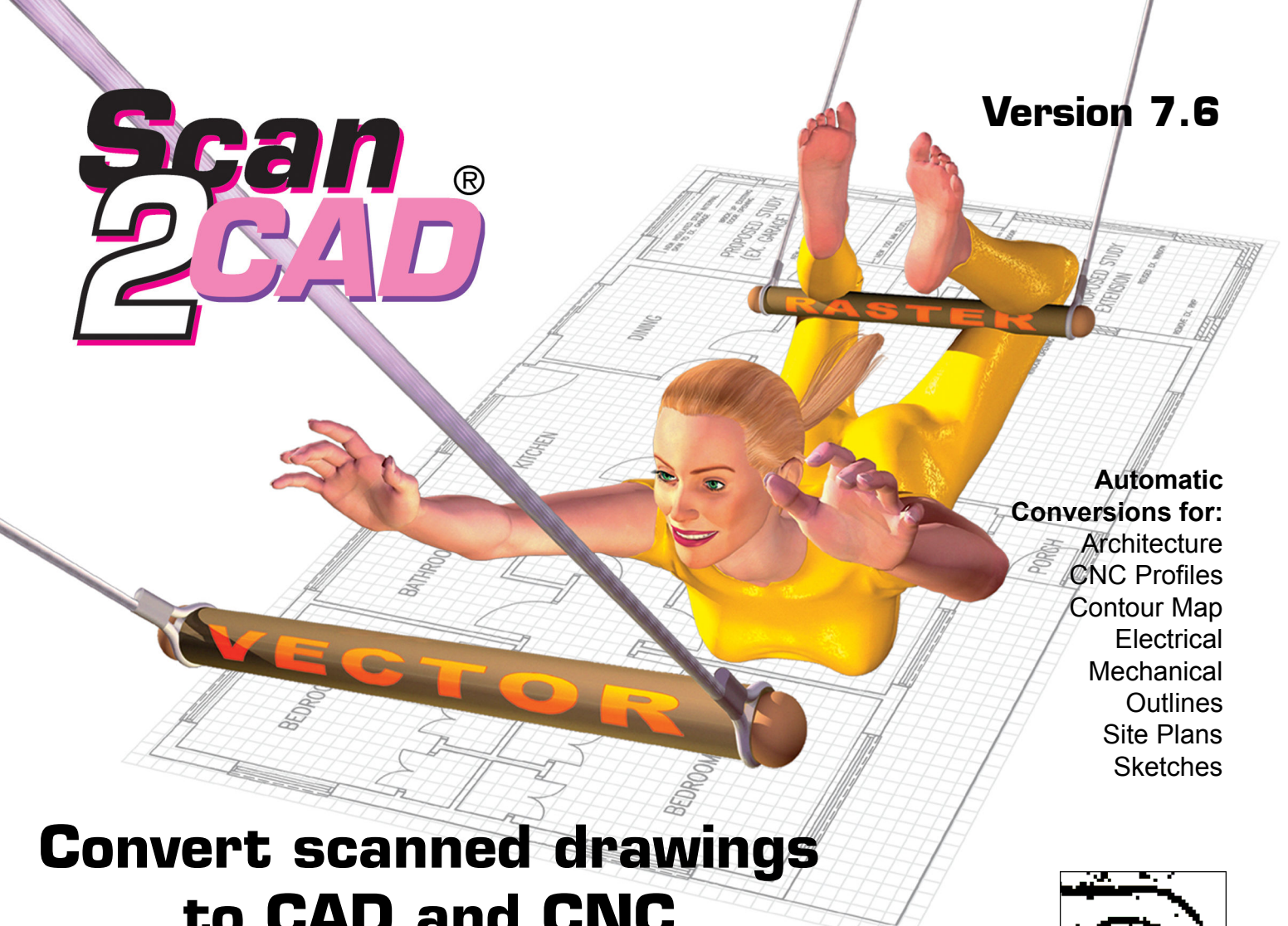


# Scan2CAD<sup>®</sup>

Version 7.6



**Automatic Conversions for:**  
Architecture  
CNC Profiles  
Contour Map  
Electrical  
Mechanical  
Outlines  
Site Plans  
Sketches

## Convert scanned drawings to CAD and CNC

### Raster to vector conversion

Scan2CAD converts your scanned drawings into DXF for quick and easy editing in your CAD program!

It's a complete raster to vector conversion solution. With Scan2CAD you can scan from TWAIN-compliant scanners or open popular raster formats, like BMP, CAL, TIF, etc. It has many tools for quickly tidying up dirty scans and is supplied with default settings that easily and automatically vectorize any drawing.

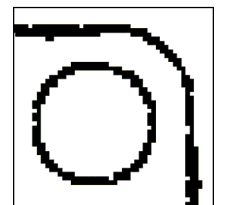
When it comes to the quality of the results no raster to vector converter does a better job. Scan2CAD's results are as good as it gets at any price! It recognizes the fundamental building blocks of your drawings - *lines including dashed and dotted lines, arcs, circles, lined hatch patterns, arrows, Bezier curves and text.*

There's NO limit on scanner or paper sizes. It works with all CAD programs, like AutoCAD, LT, etc. Whatever your need, infrequent or everyday, one drawing or many, black-and-white or color, Scan2CAD will convert your paper drawings into DXF files for fast and efficient editing in CAD. Just US \$239 / CA \$269 for Scan2CAD Regular or US \$399 / CA \$449 for Pro.

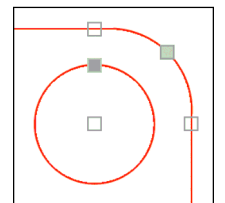
**SCAN**



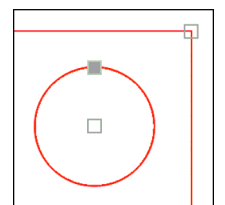
**CLEAN**



**CONVERT**



**EDIT**



**Scan2CAD v7.6. Swing from raster to vector with ease!**



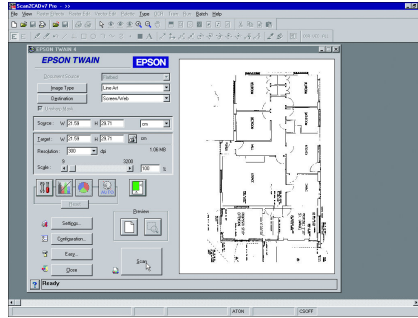
[www.designfusion.com](http://www.designfusion.com)

**designfusion**  
Toronto - Montreal - Ottawa - Quebec City  
Chicago - Philadelphia  
Tel: 1-888-567-3933  
Email: [sales@designfusion.com](mailto:sales@designfusion.com)

# Convert scanned drawings to DXF in three easy steps

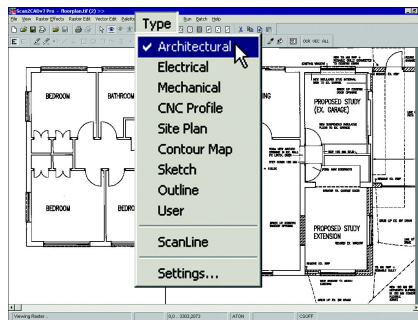
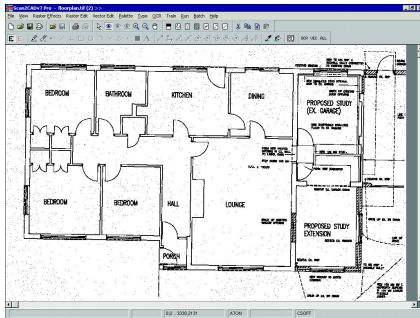
## 1. Scan or load the image

Scan2CAD lets you scan with popular TWAIN-compliant desktop scanners, like Epson (right), HP, etc. Large drawings can be scanned on desktop scanners as a set of "tiles", then re-assembled and vectorized in Scan2CAD. You can also use large format scanners, like Contex, Colortrac, Graphtec etc. to scan and save D or E-size drawings as BMP, TIFF, etc. which Scan2CAD will open.



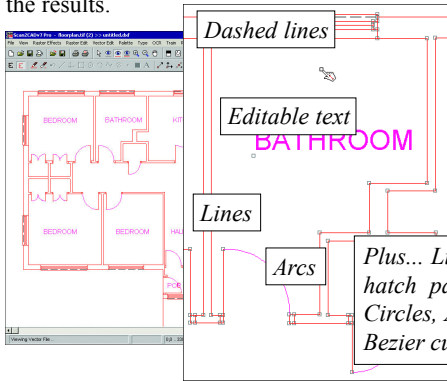
## 2. Clean the image

Dirty images (left) can be automatically despeckled. Skew drawings can be straightened. Once the scanned drawing is clean and square (below) it is ready to be converted into a vector DXF file.



## 3. Vectorize

Scan2CAD is supplied with default conversion settings. Select the one that best describes your drawing - Architectural, Map, CNC, etc. Then vectorize it with a single icon click. Settings can be adjusted to fine-tune the results.



## The end result - a DXF file you can edit in CAD

Scan2CAD saves black and white and color DXF. You can scale the DXF file to size in several ways. One easy way is to specify a known distance between two points on the image. Once you've saved the DXF file it can be edited in your PC CAD program or in Scan2CAD which has special one click "SnapTidy" tools for vector editing.

## Acclaimed around the world

First released in 1995, Scan2CAD is used by thousands of CAD and CNC professionals in over 80 countries worldwide.

2007 "Rich in features and matches considerably more expensive packages." *Desktop Engineering Magazine, USA.*

2005 "Amazing" *CAD&CG Mag, Japan.*

2004 "Has most of the functionality of programs costing 10 x more" *Cadalyst, USA.*

2003 "A very high standard of conversion" *Model Engineers Workshop, UK.*

2002 "Excellent value ... thoroughly recommended" *Royal Incorp. of Architects in Scotland Practice Information, UK.*

2001 "Astonishingly powerful and a great

bargain. Outstanding. 5 out of 5 stars." *Cadalyst, USA.*

2000 "Impressive" *CADDesk, UK.*

1999 "A major turning point in scan conversion cost effectiveness. Highly recommended" *MultiCAD, AUS.*

"Scan2CAD v7 Pro is very impressive, producing outstanding results from the many scanned images converted so far. It compares very well to other packages I've looked at, some costing up to £3000."

*Carl Pickering, Document Technician, Preston City Council, UK.*

"Many thanks for the great advice. Your rapid response to problems/questions and credible suggestions are unmatched when compared to other software firms we've dealt with. Thanks for the high standard of service".

*Paul Michor, Custom Metal Fabrication, Hooper Corporation, USA.*

## Main Features

### Scan or load

- Can be used with any size scanner, from desktop models to E-size and larger.
- Acquire from TWAIN compliant scanners.
- Tile large drawings using a desktop scanner, merge tiles, vectorize.
- Load black and white, grayscale or color raster images.
- Load any popular raster format like BMP, CAL, TIFF, raster PDF\*, PNG, JPG etc.

### Clean - raster tidy-up

- Dedicated tidy-up tools - automatically despeckle dirty drawings, fill holes, mend broken lines etc.
- Deskew skewed images.
- Raster drawing and editing tools.
- Color palette editing tools including automatic color reduction.

### Convert - vectorizing

- Supplied with default conversion settings - Architectural, Mechanical, Electrical, CNC, Contour Maps, Site Plans, Sketch, Outline.
- Edit default settings to fine-tune results.
- Recognizes continuous, dashed and dotted lines, arcs, circles, lined hatch patterns, arrows, Bezier curves and text (OCR).
- Converts basic text fonts to editable text using OCR.
- Extend OCR with Font Training.\*
- Type in TrueType characters as 100% accurate vector outlines.
- Batch convert many drawings at once.\*

### Edit

- Vector draw and erase tools.
- Edit vectors with raster image displayed beneath (Raster Overlay).
- One click editing tools rapidly tidy up vectorised drawings.
- One click editing of line styles.
- Spellcheck OCR'd text for quick and easy editing with customizable Dictionary.\*

### Scale and save vectors

- Three methods of scaling include scale by specifying distance between two points.
- Save vectors as color\* or B/W DXF.
- Save DXF that can be edited in any CAD or CNC program including all versions of AutoCAD and LT.

### Pricing and system requirements

- Regular v7.6 US \$239 / CA \$269  
Pro v7.6 US \$399 / CA \$449  
Optional printed manual available.
- Substantial discounts on two+ copies.
- Requires Windows 98, ME, NT4, 2000, XP or Vista with minimum 32 Mb RAM.
- \* Feature available in Pro version only. Regular does not have: Raster PDF support, OCR font training, dictionary spellcheck, color vectorization, batch conversion, command line support.